

WUXI WELL LEADER MACHINERY CO., LTD



汇力机械
WELL LEADER

 无锡市汇力机械有限公司
WUXI WELL LEADER MACHINERY CO.,LTD.

地址：江苏省无锡市钱桥镇稍塘工业园
电话：0086-510-83271222
传真：0086-510-83271169
邮编：214153
网址：www.wellleader.com
邮箱：info@wellleader.com

ADD: Shaotang Industry Park, Qianqiao Town,Wuxi
Jangsu Province China
TEL : 0086-510-83271222
FAX : 0086-510-83271169
P.C. : 214153
WEB: www.wellleader.com
EMAIL:info@wellleader.com

创新思维 / 超越自我 / 追求卓越

➤ INNOVATING / IMPROVING / INSPIRING



YEAMA TECH SDN BHD

Company Profile

实践创造完美

PRACTICE MAKES PERFECT

高品质创造企业竞争力

HIGH QUALITY CREATES COMPETITIVE POWER



公司简介 Company Profile

汇力机械是专业焊接、切割设备制造商,集研发、设计、制造、销售、服务于一体。公司产品规格齐全,质量可靠,出口免检。高标准的质量要求,完善的售后服务,严格的管理制度,使公司获得了海内外客户的一致认可和赞誉,使产品走向了不同的国度。公司将不断努力,积极进取,使汇力机械品牌享誉全球!

We are a professional high-tech company engaged in designing and manufacturing automatic welding equipment, welding robot system and CNC plasma cutting system.

Well Leader Machinery was established in 2005, is a leading supplier for automatic welding system, covering welding rotators, welding positioners, welding manipulators, H beam production line, CNC plasma cutting machines, etc.

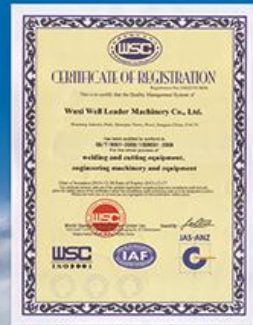
Since established, our machines served several industries like aviation, military, automobile, boiler, pressure vessel, oil & gas, irrigation and shipbuilding. As these industries developing, the requirements of the equipments technology are developed and improved, the machines are widely being applied and enjoy great reputation in these industries at different countries.

We will keep our technology innovation to meet more requirements and creat more business opportunities. Stick to the idea of "Innovating, Improving, Inspiring", we are responsible to devote to China industry development and carry our brand forward to the world!

Awarded Certificates

荣获证书

AWARDED CERTIFICATES

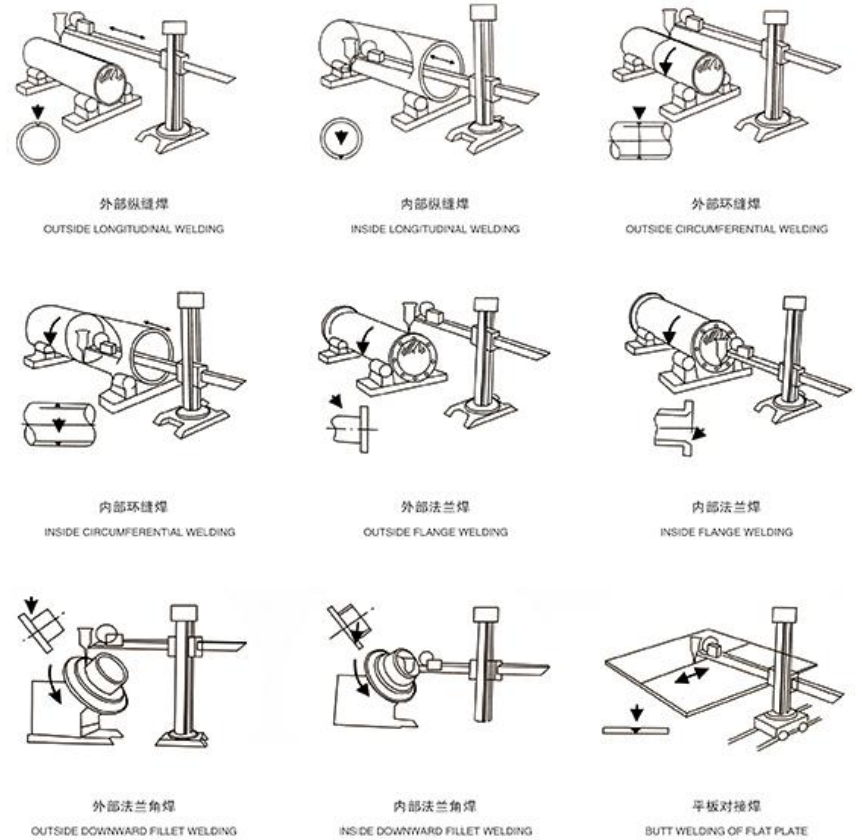


Automation Welding Solutions

>> 焊接辅助机械 AUTOMATOIN WELDING EQUIPMENT



>> 焊接中心示意图 WELDING CENTER DEMONSTRATE SCHEME



Welding Manipulator

>> 焊接操作架

WELDING MANIPULATOR (COLUMN&BOOM)

技术特点

HC系列自动焊接操作机可实现锅炉、压力容器、管道、风塔等圆形工件的内外及纵环缝的自动焊接。

- * 固定带回转式
- * 移动带回转式
- * 轻型操作机
- * 重型操作机
- * PLC控制
- * 埋弧焊/气保焊/氩弧焊
- * 焊剂自动输送回收系统
- * 载人平台



TECHNICAL FEATURES

HC series manipulator is applied to automatically weld boilers, pressure vessels, pipes, wind towers and tanks for inside/outside and longitudinal/circumference seams.

- * Fixed with $\pm 180^\circ$ rotation
- * Movable with $\pm 180^\circ$ rotation
- * Light duty model
- * Heavy duty model
- * PLC optional
- * SAW/MIG/MAG/CO₂/TIG/GMAW/GTAW/ SMAW
- * Automatic Flux feeding & recovery system
- * Operator's observe seat

>> 焊接操作架

WELDING MANIPULATOR (COLUMN&BOOM)

重型操作机 HEAVY DUTY WELDING MANIPULATOR

规格型号 Model	HC4040H	HC5050H	HC6060H	HC7070H	HC8080H
水平伸缩行程 Transverse stroke (mm)	4000	5000	6000	7000	8000
升降行程 Elevate stroke (mm)	4000	5000	6000	7000	8000
立柱回转角度 Column rotate range	$\pm 160^\circ$				
横臂升降速度 Boom elevate speed	1000mm/min				
横臂进给速度 Boom transverse speed	120~1200mm/min				
十字微滑行程 Cross slide stroke	100*100mm motorized				
端部允许载荷 Max load at end	250kg	250kg	250kg	250kg	250kg
台车进退速度 Base travel speed	移动式 Movable	200~2000mm/min			
	固定式 Fixed	0			
导轨间距 Rail distance	移动式 Movable	1730mm	1730mm	2000mm	2000mm
	固定式 Fixed	0			
横臂最低高度 Min height of the boom	移动式 Movable	805mm	805mm	865mm	915mm
	固定式 Fixed	705mm	705mm	765mm	815mm
设备总高 Overall height	移动式 Movable	6170mm	7170mm	8230mm	9350mm
	固定式 Fixed	6070mm	7070mm	8130mm	9230mm



轻型操作机 LIGHT DUTY WELDING MANIPULATOR

规格型号 Model	HC1515	HC2020	HC3030	HC4040	HC5050
水平伸缩行程 Transverse stroke (mm)	1500	2000	3000	4000	5000
升降行程 Elevate stroke (mm)	1500	2000	3000	4000	5000
立柱回转角度 Column rotate range	$\pm 180^\circ$ By manual	$\pm 180^\circ$	$\pm 180^\circ$	$\pm 180^\circ$	$\pm 180^\circ$
横臂升降速度 Boom elevate speed	400mm/min	1000mm/min			
横臂进给速度 Boom transverse speed	120~1200mm/min				
十字微滑行程 Cross slide stroke	100*100mm by manual	100*100mm motorized			
端部允许载荷 Max load at end	50kg	100kg			
台车进退速度 Base travel speed	移动式 Movable	By manual		200~2000mm/min	
	固定式 Fixed	0			
导轨间距 Rail distance	移动式 Movable	800mm	800mm	1560mm	1730mm
	固定式 Fixed	0			
横臂最低高度 Min height of the boom	移动式 Movable	468mm	515mm	780mm	800mm
	固定式 Fixed	448mm	475mm	670mm	710mm
设备总高 Overall height	移动式 Movable	2310mm	3140mm	4940mm	6960mm
	固定式 Fixed	2270mm	3120mm	4830mm	6870mm



Conventional Welding Rotator

>> 可调式滚轮架 CONVENTIONAL WELDING ROTATOR

技术特点

可调式滚轮架适用于圆筒体的焊接、抛光、衬胶、装配等。两轮间距可以任意调节，轮子采用高品质PU轮或高强度全钢轮，承载能力强，使用寿命长。配有调速交流变频器及制动电机，提高设备的工作能力及安全性。

- * 每套滚轮架标准配备一台主动轮，一台从动轮和一套电控系统
- * 可配多台从动轮
- * 采用施耐德/三菱等高品质调速变频器
- * 手控盒超长配线15米控制距离
- * 可配无线遥控盒，遥控距离≤200米
- * CE认证产品



TECHNICAL FEATURES

The conventional rotator is applied for welding, polishing, glue-lining, or assembling of pipes, tanks, pressure vessels, etc. The distance of two rollers are adjustable, and rollers are made in high quality PU material, or high strength and toughness steel. Equipped with qualified AC inverter and brake motors, the working performance and safety are well improved and guaranteed.

- * Each set of rotator normally consists of one power unit, one idler unit and one electrical control system.
- * Several idler units can be set.
- * Schneider / Mitsubishi inverter.
- * Remote box with 15 mtrs control cable.
- * Optional wireless remote box for 200mtrs control distance.
- * CE Approved.



>> 可调式滚轮架 CONVENTIONAL WELDING ROTATOR



技术参数 PARAMETERS

型号 Model	最大承载 Max loading (Kg)	适用工件直径 Applied job dia (mm)	滚轮直径和宽度 Wheel dia. & width(mm)		滚轮线速度 Wheel linear speed (mm/min)	电机功率 Motor power (kw)
			橡胶轮 Rubber	金属轮 Metal		
GK5	5000	φ250-2300	φ250*100	φ240*20*2	100-1000 By stepless inverter	2 × 0.37
GK10	10000	φ320-2800	φ300*120	φ290*25*2		2 × 0.55
GK20	20000	φ500-3500	φ350*120	φ340*35*2		2 × 1.1
GK40	40000	φ600-4200	φ400*120	φ390*45*2		2 × 1.5
GK60	60000	φ750-4800	φ450*120	φ440*60*2		2 × 2.2
GK80	80000	φ850-5000	φ500*120	φ490*70*2		2 × 3
GK100	100000	φ1000-5500	φ500*120	φ490*100*2		2 × 4
GK160	160000	φ1100-6000	-	φ650*220		2 × 4
GK250	250000	φ1200-7000	-	φ700*290		2 × 5.5
GK400	400000	φ1500-7500	-	φ800*320		2 × 7.5
GK650	650000	φ1400-8500	-	φ900*400		2 × 11

SA Welding Rotator

>> 自调式滚轮架 SELF-ALIGN (SA) WELDING ROTATOR

技术特点

自调式滚轮架适用于圆筒体的焊接、抛光、衬胶、装配等。轮子间距无需调节，轮子采用高品质PU轮或高强度全钢轮，承载能力强，使用寿命长。配有调速交流变频器及制动电机，提高设备的工作能力及安全性。

- * 每套滚轮架标准配备一台主动轮，一台从动轮和一套电控系统
- * 可配多台从动轮
- * 采用施耐德/三菱等高品质调速变频器
- * 手控盒超长配线15米控制距离
- * 可配无线遥控盒,遥控距离≤200米
- * CE认证产品

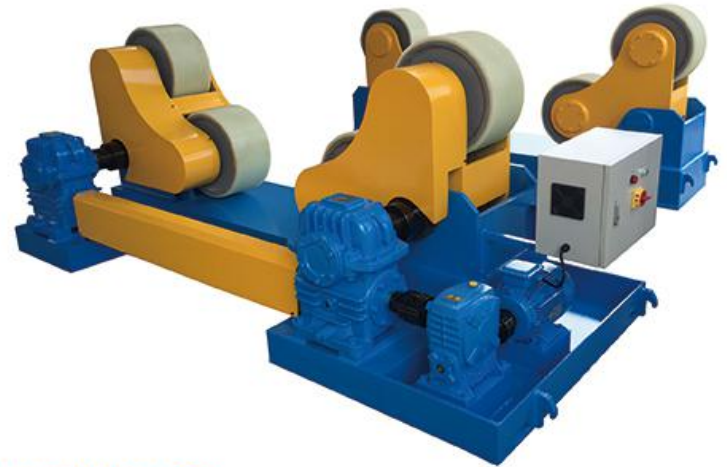


TECHNICAL FEATURES

The self align (SA) rotator is applied for welding, polishing, glue-lining, or assembling of pipes, tanks, pressure vessels, etc. The rollers are automatically adjusted for different diameters, and rollers are made in high quality PU material, or high strength and toughness steel. Equipped with qualified AC inverter and brake motors, the working performance and safety are well improved and guaranteed.

- * Each set of rotator normally consists of one power unit, one idler unit and one electrical control system.
- * Several idler units can be set.
- * Schneider / Mitsubishi inverter.
- * Remote box with 15 mtrs control cable.
- * Optional wireless remote box for 200mtrs control distance.
- * CE Approved.

>> 自调式滚轮架 SELF-ALIGN (SA) WELDING ROTATOR



技术参数 PARAMETERS

型号 Model	最大承载 Max loading (Kg)	适用工件直径 Applied job dia (mm)	滚轮直径和宽度 Wheel dia. & width(mm)		滚轮线速度 Wheel linear speed (mm/min)	电机功率 Motor power (kw)
			橡胶轮 Rubber	金属轮 Metal		
GZ5	5000	Φ250-2300	Φ250*100	Φ244*20*2	100-1000 By stepless inverter	0.75
GZ10	10000	Φ320-2800	Φ300*120	Φ290*25*2		1.1
GZ20	20000	Φ500-3500	Φ350*120	Φ340*30*2		1.5
GZ40	40000	Φ600-4200	Φ400*120	Φ390*40*2		3
GZ60	60000	Φ750-4800	Φ450*120	Φ440*50*2		4
GZ80	80000	Φ850-5000	Φ500*120	Φ490*60*2		4
GZ100	100000	Φ1000-5500	Φ500*120	Φ490*80*2		5.5
GZ150	150000	Φ1100-6000	-	Φ600*280		7.5
GZ250	250000	Φ1200-7000	-	Φ700*300		11
GZ500	500000	Φ1800-8000	-	Φ850*350		15

Tilt Positioner

>> 倾翻式变位机 TILT POSITIONER

技术特点

焊接变位机由工作台、回转机构、翻转机构和电控系统组成。通过翻转工作台至一定角度，使工件处于便于焊接或装配的位置。工作台的回转，使工人操作更便捷更轻松更高效。

- * 回转支撑结构，360度无限回转，回转更平稳，转速更均衡
- * 施耐德/三菱交流调速变频器
- * 西门子/欧姆龙/施耐德电气元件
- * 标配手控盒/脚踏开关
- * 可配无线遥控盒,遥控距离≤200米
- * 限位开关防止翻转过度
- * CE认证产品



TECHNICAL FEATURES

The Welding Positioner is consisted of working table, rotation slew bearing, turnover mechanism, and electrical control system. Tilting the working table to a certain position, the workpiece would be convenient for Operator's welding or assembling. The unlimited rotation of the table, makes operation more easy, more convenient and more efficient.

- * Slew bearing structure, unlimited rotation in 360°, more stable and equal.
- * Schneider / Mitsubishi AC inverter.
- * Siemens / Omron / Schneider electrical components.
- * Standard remote box / foot pedal.
- * Optional wireless remote box for 200mtrs control distance.
- * Equipped limited switch to prevent over running.
- * CE Approved.

>> 倾翻式变位机 TILT POSITIONER



技术参数 PARAMETERS

型号 Model	HB-03	HB-06	HB-10	HB-20	HB-30	HB-50	HB-100
额定承载 Rated capacity	300kg	600kg	1000kg	2000kg	3000kg	5000kg	10000kg
额定承载时最大重心距 Max gravity at rated capacity	200mm	250mm	300mm	300mm	300mm	300mm	400mm
额定承载时最大偏心距 Max eccentric at rated capacity	150mm	150mm	150mm	200mm	200mm	200mm	200mm
回转速度 Rotate speed (rpm)	0.2-2	0.12-1.2	0.12-1.2	0.1-1.0	0.05-0.5	0.05-0.5	0.05-0.5
倾斜速度 Tilting speed (rpm)	by hands/1.3	0.35	0.35	0.35	0.35	0.2	0.2
倾翻角度 Tilt range	0-90°	0-120°	0-120°	0-120°	0-120°	0-120°	0-120°
回转电机功率 Rotate motor power	0.37kw	0.4kw	0.55kw	0.75kw	1.1kw	1.5kw	1.5kw
倾翻电机功率 Tilt motor power	0.37kw	0.37kw	0.55kw	0.75kw	1.1kw	1.5kw	2.2kw
回转台直径 Table diameter	φ600mm	φ800mm	φ900mm	φ1100mm	φ1300mm	φ1600mm	φ2000mm

Customized Products

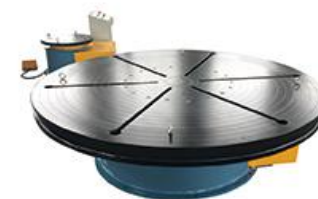
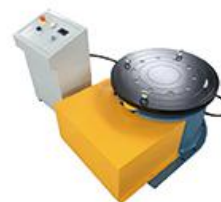
>> 升降倾翻式变位机 ADJUSTABLE TILT POSITIONER



技术参数 PARAMETERS

型号 Model	SHB-10	SHB-20	SHB-30	SHB-50
额定承载 Rated capacity	1000kg	2000kg	3000kg	5000kg
回转台升降高度 Table elevate stroke	最高1500mm MAX 最低1000mm MIN	最高1720mm MAX 最低1120mm MIN	最高1805mm MAX 最低1205mm MIN	最高2150mm MAX 最低1450mm MIN
额定承载时最大重心距 Max gravity at rated capacity	300mm	300mm	300mm	300mm
额定承载时最大偏心距 Max eccentric at rated capacity	150mm	200mm	200mm	200mm
回转速度 Rotate speed	0.12-1.2rpm	0.1-1.0rpm	0.05-0.5rpm	0.05-0.5rpm
倾翻速度 Tilting speed	0.35rpm	0.35rpm	0.35rpm	0.2rpm
倾翻范围 Tilting range	0-120°	0-120°	0-120°	0-120°
回转电机功率 Rotate motor power	0.55kw	0.75kw	1.1kw	1.5kw
倾翻电机功率 Tilt motor power	0.55kw	0.75kw	1.1kw	1.5kw
回转台直径 Table diameter	φ 900mm	φ 1100mm	φ 1300mm	φ 1600mm

>> 特质产品 CUSTOMIZED PRODUCTS



>> 风塔焊接设备

WIND TOWER WELDING FACILITIES



>> 管道机械

PIPE MACHINERY



滚槽机 PIPE GROOVING MACHINE

型号 Model	管径 Dia	壁厚 Thickness	功率 Power	速度 Speed	支脚 Legs	支托架 Support	净重 N.W
PG-6	2" -6"	7mm	450W	24rpm	4	1	66Kgs
PG-12	2" -12"	9mm	750W	24rpm	4	1	140Kgs



套丝机 THREADING MACHINE

型号 Model	管径 Dia	转速 Speed	功率 Power	板牙类型 Dies Type	支脚 Legs	净重 N.W	外形尺寸 PKG Size
PT50F	1 1/2" -2"	25rpm	750W	BSPT	4	72	76"51"57cm
PT80F	1 1/2" -3"	26/11rpm	750W	BSPT	4	105	94"60"65cm
PT100F	1 1/2" -4"	24/10rpm	900W	BSPT	4	140	100"70"63cm

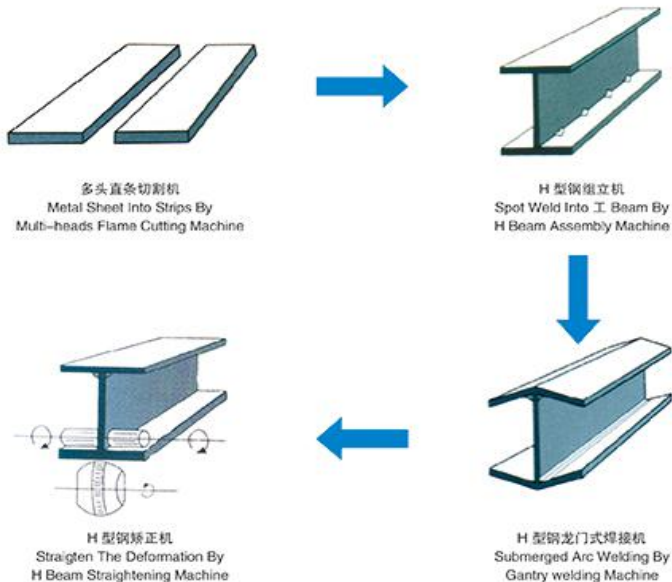
H Beam Production Line- CNC Cutting Machine

>> H型钢生产线 H BEAM PRODUCTION LINE

H型钢（轻钢）生产线组成主要由切割机、组立机、龙门焊、翼缘矫正机、抛丸机等设备组成，在生产工艺上为单机独立操作运行，可根据生产量增加龙门焊设备，以提高生产能力。

This H beam production line is mainly composed by multi-heads flame cutting machine, H beam assembly machine, H beam Gantry SAW machine, H beam straightening machine and shot blasting machine. It is flexible and can be operated separately. Production capacity can be improved greatly by adding extra Gantry SAW machine.

H型钢生产流程图 H Beam production Flow Chart



>> 数控火焰/等离子切割机 CNC FLAME/PLASMA CUTTING MACHINE

功能与特点

SG系列数控切割机分为数控火焰切割机、数控等离子切割机、数控火焰等离子一体切割机。火焰切割是一种传统的切割方式，适用于中厚碳钢板，切割厚度最大可达100MM。等离子切割可对多种金属进行切割，根据不同的板厚，选择合适的等离子电源，具有切割速度快、切割质量好的优点。采用世界领先的精细切割技术，我司的等离子切割机可使切割速度、切割质量和切割精度都达到更高的水准。



TECHNICAL PERFORMANCE

SG series CNC cutting machine has three types of models, CNC flame cutting machine, CNC Plasma cutting machine and CNC flame/plasma combined machine. Flame cutting is a general used and traditional cutting way, suitable for carbon steel with middle or above thickness, maximum cutting thickness can be 100mm. Plasma cutting is used for variable materials, like stainless steel, carbon steel, aluminum, etc. Customer can choose proper plasma power according to cutting thickness. Plasma cutting features at rapid cutting and high surface quality. Our plasma cutting machine can achieve high level cutting speed, surface quality and cutting precision by using world first class plasma cutting technology.



技术参数 PARAMETERS

型号 Model	SG-3000	SG-4000	SG-5000	SG-6000
轨距 Rail span	3000mm	4000mm	5000mm	6000mm
有效切割宽度 Cutting width	2200mm	3200mm	4200mm	5200mm
轨长 Rail length	15000mm	15000mm	15000mm	15000mm
有效切割长度 Cutting length	12500mm	12500mm	12500mm	12500mm
数控等离子 CNC plasma torch	选配 Optional	选配 Optional	选配 Optional	选配 Optional
驱动 Driving	单边 single	单边 single	双边 Double	双边 Double
切割速度 Cutting speed	50-1000mm/min	50-1000mm/min	50-1000mm/min	50-1000mm/min
快速回程 Rapid return speed	3000mm/min	3000mm/min	3000mm/min	3000mm/min
火焰切割厚度 Flame cutting thickness	6-100/200mm	6-100/200mm	6-100/200mm	6-100/200mm
数控火焰割炬 CNC flame torch	2 groups	2 groups	2 groups	2 groups
火焰直条割炬 Flame strip torch	9 groups	9 groups	9 groups	9 groups

H Beam Production Line

>> 数控火焰/直条切割机 CNC FLAME/STRIP CUTTING MACHINE



功能与特点

该系列切割机，是一种高效率的氧乙炔（或丙烷）火焰切割设备，具有纵向多头直条切割，横向直边切割的功能，可配备数控系统，实现数控火焰切割。多用于钢结构和造船行业，切割效率高、切割质量好，性能优良，工作稳定。

TECHNICAL PERFORMANCE

This series cutting machine is a high efficient equipment by using oxygen with acetylene, or propane as cutting gas. With the functions of longitudinal cutting strips by multi-heads and transverse strips cutting, it is widely used in steel structures and shipping yard industries. Furnished with CNC system, the machine can be improved for shape cutting and wide applications. This cutting machine has high cutting efficiency and good cutting quality, perfect performance and stable working condition.

技术参数 PARAMETERS

型号 Model	ZG-3000	ZG-4000	ZG-5000	ZG-6000
轨距 Rail span	3000mm	4000mm	5000mm	6000mm
有效切割宽度 Cutting width	90-2300mm	90-3300mm	90-4300mm	90-5300mm
切割速度 Cutting speed	200-2500(mm/min)	200-2500(mm/min)	100-3000(mm/min)	100-3000(mm/min)
驱动 Driving	单边 single	单边 single	双边 Double	双边 Double
切割厚度 Cutting thickness	6-100mm	6-100mm	6-100mm	6-100mm

>> H型钢组立机 H BEAM ASSEMBLY MACHINE



功能与特点

采用双向自动对中装置，自动完成钢板自动定位，无需人工调整。采用3组翼板和腹板自动液压夹紧结构，解决了腹板送进中摇摆问题。双自动CO₂点焊机头对称设置，焊枪采用气动送进、机械导轮跟踪，点焊速度快，点焊质量高。主焊系统采用变频和PLC控制，液压系统控制。

TECHNICAL PERFORMANCE

Automatic centering device makes the steel plate auto position without manual adjusting. Use three sets of hydraulic clamping devices for web and flange, to solve the tail swaying when feeding in web plate. CO₂ welding heads are symmetric, feeding by air pressure, guiding wheels tracking. Welding system is controlled by inverter and PLC, hydraulic system control valves.

技术参数 PARAMETERS

型号 Model	Z15	Z18	Z20
适用腹板高度 Applied web height	200-1500mm	200-1800mm	200-2000mm
适用腹板厚度 Applied web thickness	6-50mm	6-50mm	6-50mm
适用翼板宽度 Applied flange width	200-800mm/1000mm	200-800mm/1000mm	200-800mm/1000mm
适用翼板厚度 Applied flange thickness	6-60mm	6-60mm	6-60mm
适用型钢长度 Applied beam length	4-15/18m	4-15/18m	4-15/18m
组立速度 Assembly speed	0.5-6m/min	0.5-6m/min	0.5-6m/min
输入辊道 Input conveyor	2600mmx3	2600mmx3	2600mmx3
输出辊道 Output conveyor	2600mmx3	2600mmx3	2600mmx3
整机功率 Total power	18.7+2x12.8Kw	18.7+2x12.8Kw	18.7+2x12.8Kw

H Beam Production Line

>> H型钢龙门焊

H BEAM GANTRY WELDING MACHINE



功能与特点

该系列龙门焊主要用于H型钢的自动埋弧焊接，双焊接头设计，同时对两条H型钢进行船型位置焊接。机架采用标准矩形钢管焊接而成，重量轻，强度高。自动双向导弧装置采用直线导轨，跟踪精度高，体积小，能对焊缝进行动态跟踪，并实现双向往复焊接，保证焊缝质量，同时提高焊接效率。

TECHNICAL PERFORMANCE

It is used for automatically welding H beam, double welding heads can weld two beams at the same time. The frame is welded by standard rectangle pipes, light and strong. Automatic double arc guides are linear guider, with high precision, compact structure and can repeat welding from both ends. It can highly ensure the welding quality and improve working efficiency.

Tandem wires or twin wires can be furnished upon customer request, which can obviously improve the welding efficiency.

>> H型钢翼缘矫正机

H BEAM STRAIGHTENING MACHINE



功能与特点

转动效率高，矫正速度快。
结构简单，矫正轮的垂直进给为机械式
轮子的调整设有标尺，方便直观
矫正轮采用优质合金钢，确保长期稳定运行
主机设有近控操作盒，方便操作
中小型H型钢翼缘矫正的理想设备

TECHNICAL PERFORMANCE

High transmission efficiency, high straightening speed.
Simple structure, vertical wheel feeding is mechanical.
There is measure for adjusting wheels, easy simple and visible.
Wheels are made of quality alloyed steel, to assure long life working.
There is a remote box, for easy operation.
It's ideal equipment for straightening light duty beams.

技术参数 PARAMETERS

型号 Model	JZ-20	JZ-40
翼板宽度 Flange width	150-600mm	200-800mm
最大翼板厚度 Max Flange thickness	20mm	40mm
最小腹板高度 Min web height	160mm	350mm
型钢材质 Material	Q235A	Q235A
矫正速度 Straightening speed	5.7m/min	18m/min
输入辊道 Input conveyor	6m	6m
输出辊道 Output conveyor	6m	6m
电机功率 Motor power	9Kw	25Kw

技术参数 PARAMETERS

型号 Model	LHA	LHT
适用翼板宽度 Applied flange width	200-800mm/1000mm	200-800mm/1000mm
适用腹板高度 Applied web height	200-1500mm	200-2000mm
适用型钢长度 Applied beam length	4-15/18m	4-15/18m
焊剂回收机 Flux recovery sys	100kg*2	100kg*2
主机功率 Main machine power	9kw(不含焊机, exclude welding power)	

H Beam Production Line

>> H型钢液压矫正机

H BEAM HYDRAULIC STRAIGHTENING MACHINE

功能与特点

该机用于矫正H型钢翼缘板在焊接过程中产生的变形，其矫正轮装置采用轴箱式结构，承载能力大，调整间距采用液压缸推动，平稳可靠。主油缸采用优质密封圈，密封性能好，使用寿命长，所有动作的调整均设有标尺，确保使用方便、准确。泵站上设有精滤器，确保电磁阀长期可靠使用，主转轮、矫正轮均采用优质合金钢，并经先进的热处理工艺，确保其长期使用不会产生裂纹等缺陷。两边辊道采用液压升降，防止工件矫正完脱离辊道时破坏辊道，操作方便，确保安全。



TECHNICAL PERFORMANCE

This machine is used to straighten the deformed H beam flange. The straightening wheel device is axis-box type, with big capacity, and with the hydraulic cylinder promotes to adjust the distance. The main hydraulic cylinder has sealing ring of good quality, which has perfect sealing effect and long life. All the movement and adjust has scale ensuring convenient use and accuracy. The pump station has filter which ensures a long life of electromagnetic valve. Straightening wheels are made of good alloy steel and done advanced heat treatment, guarantee no crack in long term use. The conveyors at two sides are hydraulic elevated, which prevents the job destroying conveyors in case drop.

技术参数 PARAMETERS

型号 Model	YTJ-60B	YTJ-80B
翼板宽度 Flange width	180-800mm	200-800mm
最大翼板厚度 Max Flange thickness	60mm	80mm
最小腹板高度 Min web height	350mm	350mm
型钢材质Material	16Mn	16Mn
矫正速度 Straightening speed	6.15m/min/Q345	6.56m/min/Q345
输入辊道 Input conveyor	9m	9m
输出辊道 Output conveyor	9m	9m
电机功率 Motor power	37Kw	52Kw

>> 拼焊矫一体机

INTEGRATED H BEAM WELDING MACHINE (3 IN 1)



功能与特点

PHJ系列H型钢拼焊矫一体机是生产焊接H型钢的一种高效设备，可在同一台机器上完成H型钢的精确拼装组立、埋弧焊接、翼缘板焊接变形的矫正。工件成“工”形组立焊接，适用于生产焊脚高度在8MM以下的轻型H型钢。该机器占地小，省去了单台机器生产时各工序间的吊转等环节，提高效率，是一款科技含量高、经济实用的生产设备。

TECHNICAL PERFORMANCE

Integrated H beam welding machine is a high efficient equipment for producing H beam. The assembling, submerged arc welding and straightening can be finished on one machine. It process beam at I position and is suitable for light H beam with fillet size less than 8mm.

普通型 LIGHT DUTY MODEL

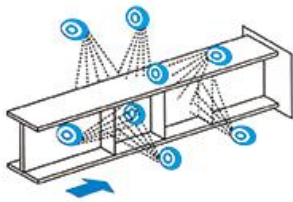
型号 Model	PHJ15	PHJ18	PHJ20
翼板厚度 Flange thickness	6-25mm	6-25mm	6-25mm
翼板宽度 Flange width	200-800mm	200-800mm	200-800mm
腹板厚度 Web thickness	5-20mm	5-20mm	5-20mm
腹板高度 Web height	200-1500mm	200-1800mm	200-2000mm
型钢长度 Beam length	4000-15000mm	4000-15000mm	4000-15000mm

重型 HEAVY DUTY MODEL

型号 Model	PHJ15-HD	PHJ18-HD	PHJ20-HD
翼板厚度 Flange thickness	6-40mm	6-40mm	6-40mm
翼板宽度 Flange width	200-1000mm	200-1000mm	200-1000mm
腹板厚度 Web thickness	5-28mm	5-28mm	5-28mm
腹板高度 Web height	200-1500mm	200-1800mm	200-2000mm
型钢长度 Beam length	4000-15000mm	4000-15000mm	4000-15000mm

H Beam Production Line

>> H型钢抛丸清理机 H BEAM SHOT BLASTING MACHINE



技术参数 PARAMETERS

型号 Model	HP0816	HP1018	HP1220
工件截面 [宽*高] Job size (WXH)	800*1600mm	1000*1800mm	1200*2000mm
工件长度 Job length		3000-15000mm	
表面清洁度 Surface cleanliness (GB8923-88)		A-B Sa2-Sa2.5	
表面粗糙度 Surface roughness (GB1031-83)		15-50um	
抛丸器数量 No. of blaster	8	8	10
输送速度 Transport speed		0.5-5m/min	
链道承载 Load capacity on conveyor	200kg/m	1000kg/m	1000kg/m
主机外形尺寸 Main body size	6770*2900*3150mm	7895*2985*3460mm	7895*3200*3760mm
地坑深度 Depth under floor		1900mm	
总功率 Total power	125kw	140kw	250kw

>> H型钢抛丸流程图 SHOT BLASTING FLOW CHART



操作中 Operating



进料 Feed



进行中 Doing



出料 Discharge



部分效果图
Partial Effect

H Beam Production Line

>> H型钢自动焊接生产线 H BEAM AUTOMATIC WELDING LINE



功能与特点

H型钢重钢生产线主要由H型钢组立机、悬臂式埋弧焊机、90度翻转架、60度翻转架、180度移动式翻转架、液压矫正机、端面铣和重载运输辊道组成。整个型钢的生产过程在重载运输辊道上完成，不需要使用行车进行翻转。

TECHNICAL PERFORMANCE

H beam automatic production line is mainly furnished by following facilities, such as H beam assembly machine, cantilever SAW machine, 90° overturning rack, 60° overturning rack, 180° movable overturning rack, hydraulic straightening machine, end face milling machine and heavy duty transport conveyor. The beam is transported on conveyor and overturned by overturning racks, avoid using overhead crane.

>> 主要组成设备 MAIN FACILITIES



悬臂式焊机 Cantilever SAW machine



60° 翻转机 60° overturning machine



90° 翻转机 90° overturning machine



移钢机 Transfer Bed



180° 移动翻转架 180° movable overturning rack

Milling Machine

>> 端面铣 END FACE MILLING MACHINE



功能与特点

该设备主要用于H型钢，箱形柱及其他轧制型钢两端的铣削加工。具有操作方便、结构简单、调整迅速等优点，是钢结构生产的必备设备。

TECHNICAL PERFORMANCE

It is mainly used for the end of H beam, BOX beam, or other rolled beam. It has such features as easy operation, simple structure, rapid adjusting, so it's a necessary equipment for producing steel structures.

技术参数 PARAMETERS

型号 Model	DX1215	DX1515	DX1220	DX1230
处理截面 Process section size	1200x1500mm	1500x1500mm	1200x2000mm	1200x3000mm
铣削头功率 Milling head power	7.5kw	7.5kw	7.5kw	7.5kw
水平进给速度 Horizontal feed speed	100-800mm/min VFD	100-800mm/min VFD	100-800mm/min VFD	100-800mm/min VFD
铣削头升降速度 Milling head vertical speed	100-800mm/min VFD	100-800mm/min VFD	100-800mm/min VFD	100-800mm/min VFD
主轴转速 Spindle speed of milling head	75-420rpm, in six steps	75-420rpm, in six steps	75-420rpm, in six steps	75-420rpm, in six steps
铣削角度 Milling head range	0-45°	0-45°	0-45°	0-45°

>> 钢板铁边机 EDGE MILLING MACHINE/BEVELING MACHINE



技术参数 PARAMETERS

型号 Model	XBJ-6	XBJ-9	XBJ-12	XBJ-18
洗削行程 Beveling stroke	6m	9m	12m	18m
洗削范围 Beveling range	0-45°	0-45°	0-45°	0-45°
洗削板厚 Beveling sheet thickness	6-50mm	6-50mm	6-50mm	6-50mm
首次切削最大深度 Max bevel depth at first cut	12-15mm	12-15mm	12-15mm	12-15mm
横向洗削速度 Transverse bevel speed	0.3/0.5m/min	0.3/0.5m/min	0.3/0.5m/min	0.3/0.5m/min
回程速度 Return speed	5m/min	5m/min	5m/min	5m/min
主轴转速 Bevel spindle rev	125-900rpm	125-900rpm	125-900rpm	125-900rpm
洗削头数量 Nos of milling head	1(+1)	1(+1)	1(+1)	1(+1)
洗削头功率 Milling head power	7.5kw	7.5kw	7.5kw	7.5kw
平台高度 Platform height	900 mm	900 mm	900 mm	900 mm

Customer List Reference

客户列表 CUSTOMER LIST

汇力机械
WELL LEADER >>>

HERNAN GABRIEL CENTENO / ARGENTINA
SICA METALURGICA ARGENTINA S.A. / ARGENTINA
CINTOLO HNOS. METALÚRGICA S.A.I. Y C./ARGENTINA
DENTOO LTD/ DENMARK
RUUKKI POLSKA SP. Z O.O./ POLAND
JAVAC DEUTSCHLAND GMBH / GERMANY
S.C. PRODIS EST S.R.L / ROMANIA
GRUPO R, S.R.L. / DOMINICAN REPUBLIC
APPLEBY ENGINEERING LIMITED / NEW ZEALAND
OFFSHORE CONSTRUCTION SERVICES PTE LTD / SINGAPORE
FATTER PTE.LTD / SINGAPORE
EXCELMECH ENGINEERING SDN BHD/ MALAYSIA
TENAGA TIUB SDN BHD/ MALAYSIA
ALLPIPES TECHNOLOGY SDN.BHD / MALAYSIA
KEJURUTERAAN WANG YUEN SDN.BHD / MALAYSIA
TOONG YOON ENGINEERING WORKS SDN BHD / MALAYSIA
MERGE JATI ENGINEERING SDN BHD./ MALAYSIA
WASSERWELT SDN.BHD./ MALAYSIA
ZENCIMA METAL TRADING AND SERVICE SDN. BHD./ MALAYSIA
HI SPEED CONSTRUCTION/ PHILIPPINES
ITALMACC CHINE SPA/ CHILE
JALALWELD STEEL BUILDING LTD./ BANGLADESH
ALSHKHARIE CO. FOR STEEL CONSTRUCTIONS ALEPPO / SYRIA
BESTEAM OY/ FINLAND
OZ METAL SANAYI VE TIC A S/ TURKEY
CILTUG ISI SAN. VE TIC. A.S./TURKEY
MEGASTAR ENGINEERING AND CONSTRUCTION/ VIETNAM
JORDAN EST. FOR OVERHEAD CRANES/ JORDAN
INFA ENGG. PVT LTD./ INDIA
MUKAT TANKS AND VESSELS LTD/INDIA
THERMAL SYSTEMS (HYDERABAD) PVT.LTD/INDIA
SAXENA MARINE-TECH (P) LTD/INDIA

TRUSTABLE RELIABLE WARRANTABLE

WE GUARANTEE YOU IN QUALITY

SERVICE & REPUTATION.